

COLORADO BRIGHTFIELDS: User Guide

A visual guide to the web-mapping application

ABOUT COLORADO BRIGHTFIELDS

COLORADO BRIGHTFIELDS was developed by Convergence Associates and its partners, Colorado State University and Bright Rain Solutions. For additional information contact brightfields@ConvergenceAssociates.com.

This research was supported by the Colorado Evaluation and Action Lab of the University of Denver. The opinions expressed are those of the authors and do not represent the views of the Colorado Lab or the University of Denver.

Table of Contents

Technical Specifications	3
Default View with Points	4
Default View with Parcels	5
Tabular Data	6
Filters	7
Overview of Overlay, Search, Download and Filter Reset Options	8
Overlays	9
Base Maps	10
Attributes	11
Measure Tools	12
Download and Print	13
Info and Map Orientation	14

COLORADO **BRIGHTFIELDS** is designed for ease of use. Diagrams in this user guide highlight the key features of the web-mapping application.

Technical Specifications

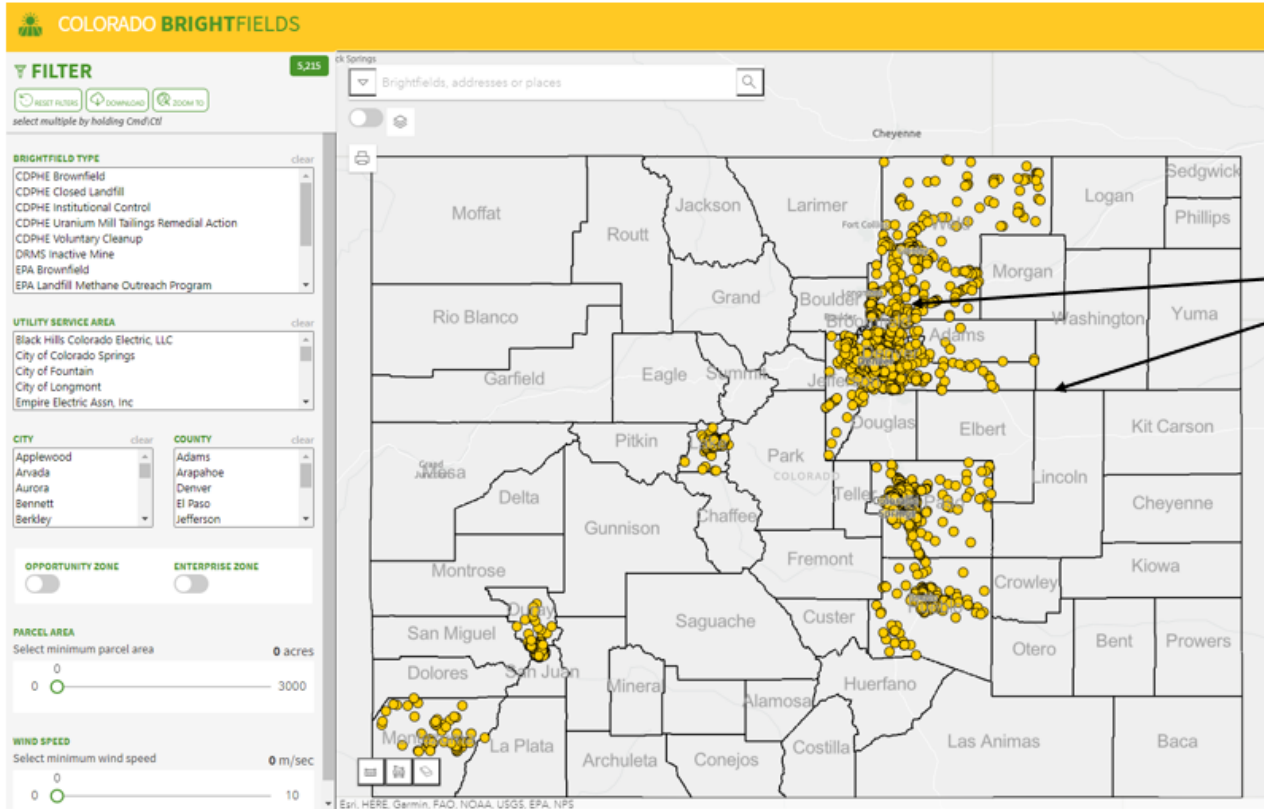
Optimization: This mapping tool was developed to be usable on screen sizes down to 1024x768 and also works with touch screens. It will work in all standard compliant browsers.

For assistance using the COLORADO **BRIGHTFIELDS** web-mapping application, contact:

Susan@ConvergenceAssociates.com.

Default View with Points

DEFAULT VIEW WITH POINTS

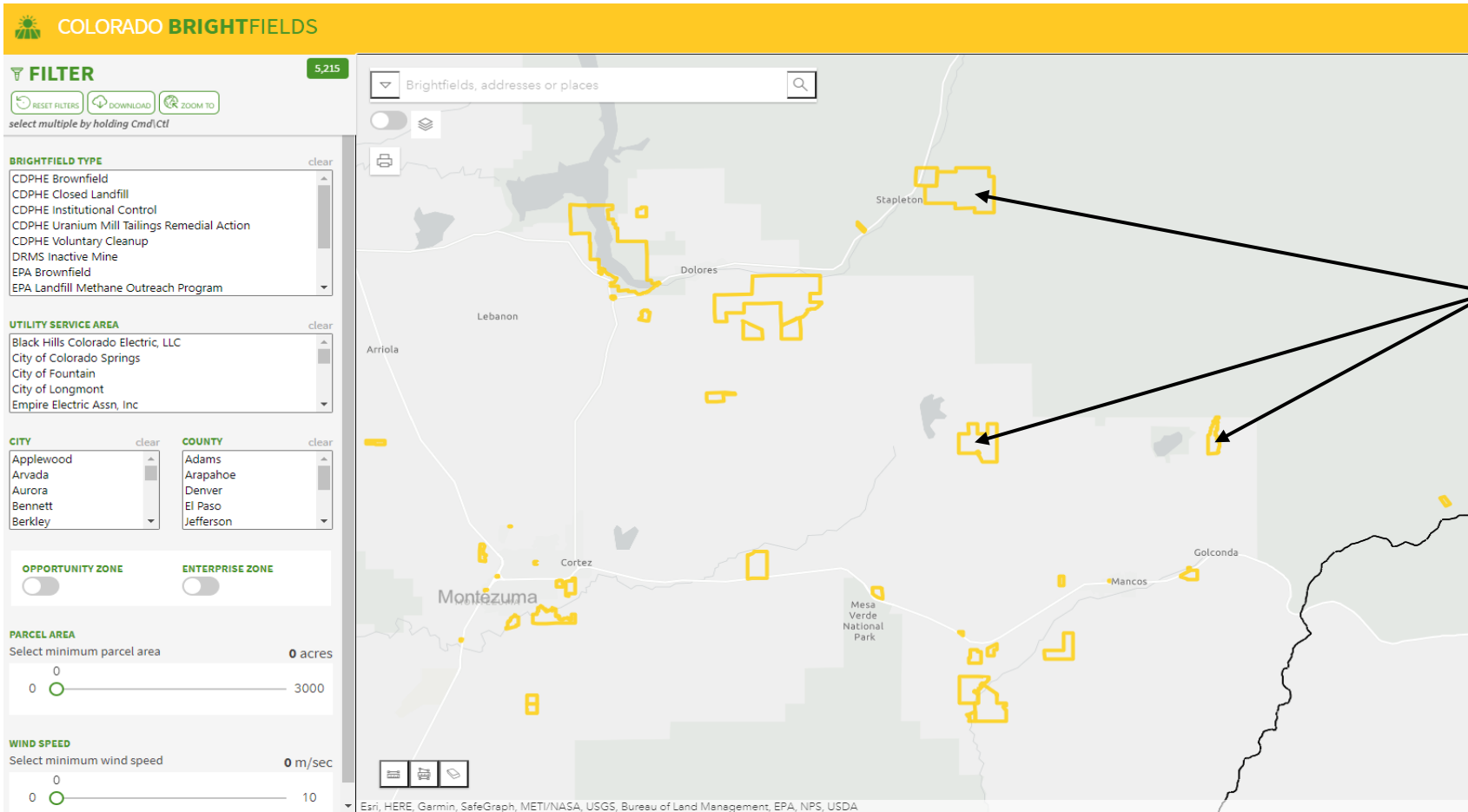


Default view with Brightfield points and county boundaries displayed

No filters, overlays or search terms applied

Brightfield points can be viewed as parcel outlines when zoomed in sufficiently

Default View with Parcels



The screenshot displays the Colorado Brightfields web application interface. At the top left, the logo and name 'COLORADO BRIGHTFIELDS' are visible. Below this is a 'FILTER' section with a green '5,215' indicator. The filter controls include 'RESET FILTERS', 'DOWNLOAD', and 'ZOOM TO'. A search bar contains the text 'Brightfields, addresses or places'. The main map area shows a geographical view with several yellow-outlined parcels. Labels on the map include 'Stapleton', 'Dolores', 'Lebanon', 'Arriola', 'Montezuma', 'Cortez', 'Mesa Verde National Park', 'Mancos', and 'Golconda'. On the left side, there are filter panels for 'BRIGHTFIELD TYPE', 'UTILITY SERVICE AREA', 'CITY', and 'COUNTY'. The 'BRIGHTFIELD TYPE' panel lists categories like 'CDPHE Brownfield' and 'EPA Landfill Methane Outreach Program'. The 'UTILITY SERVICE AREA' panel lists 'Black Hills Colorado Electric, LLC' and 'City of Colorado Springs'. The 'CITY' and 'COUNTY' panels have dropdown menus. Below these are 'OPPORTUNITY ZONE' and 'ENTERPRISE ZONE' toggle switches. At the bottom left, there are 'PARCEL AREA' and 'WIND SPEED' sliders. The bottom of the map shows a legend and a copyright notice: 'Esri, HERE, Garmin, SafeGraph, METI/NASA, USGS, Bureau of Land Management, EPA, NPS, USDA'.

Default view zoomed in to show Brightfield parcel outlines

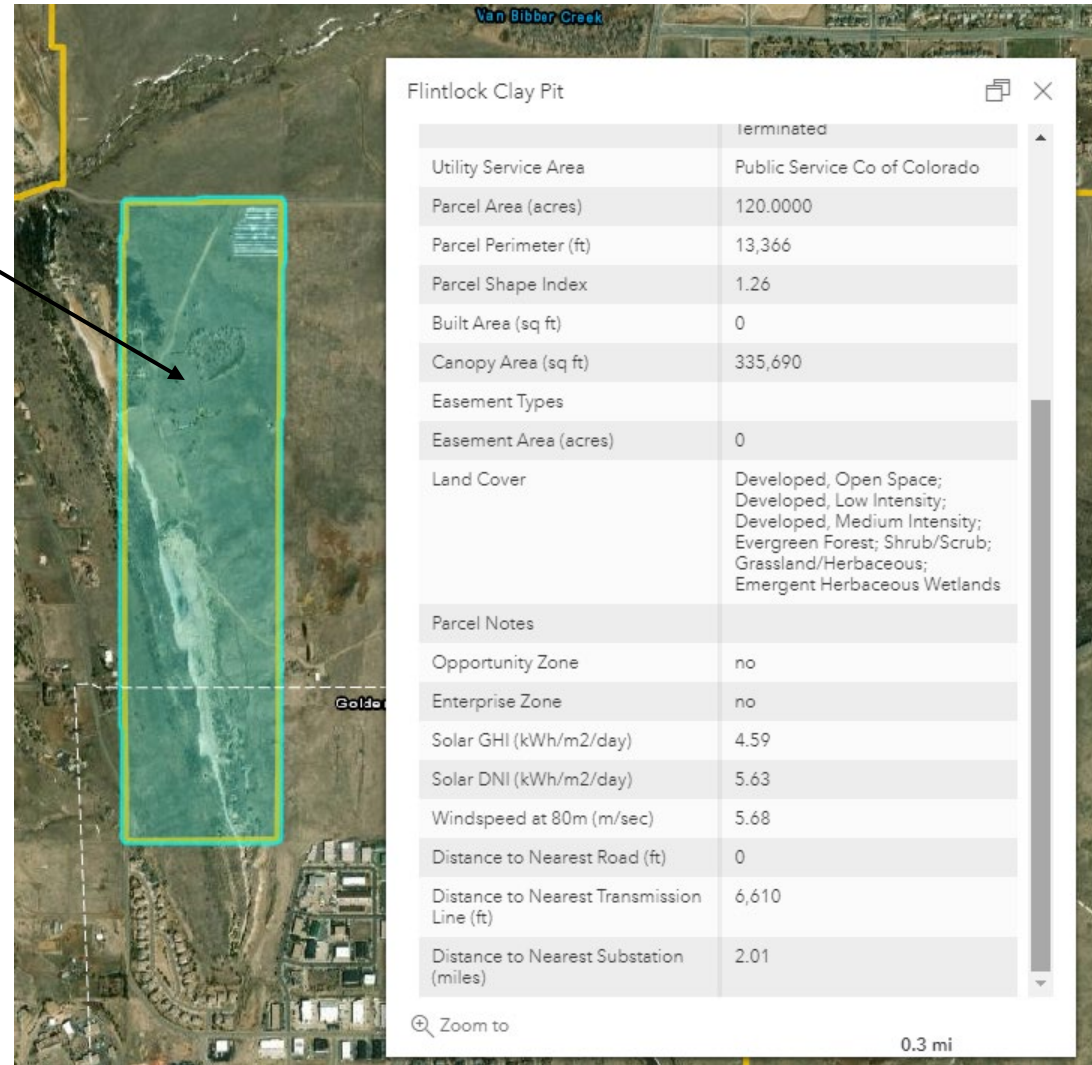
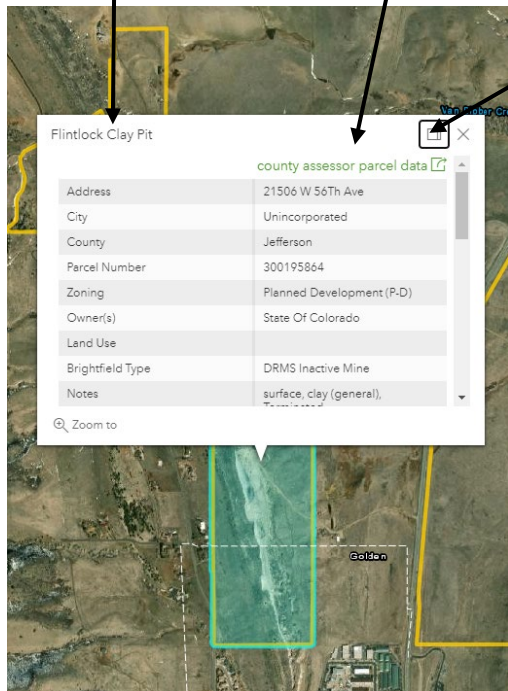
Tabular Data

Click on parcel point or parcel shape to open parcel data in pop-up table

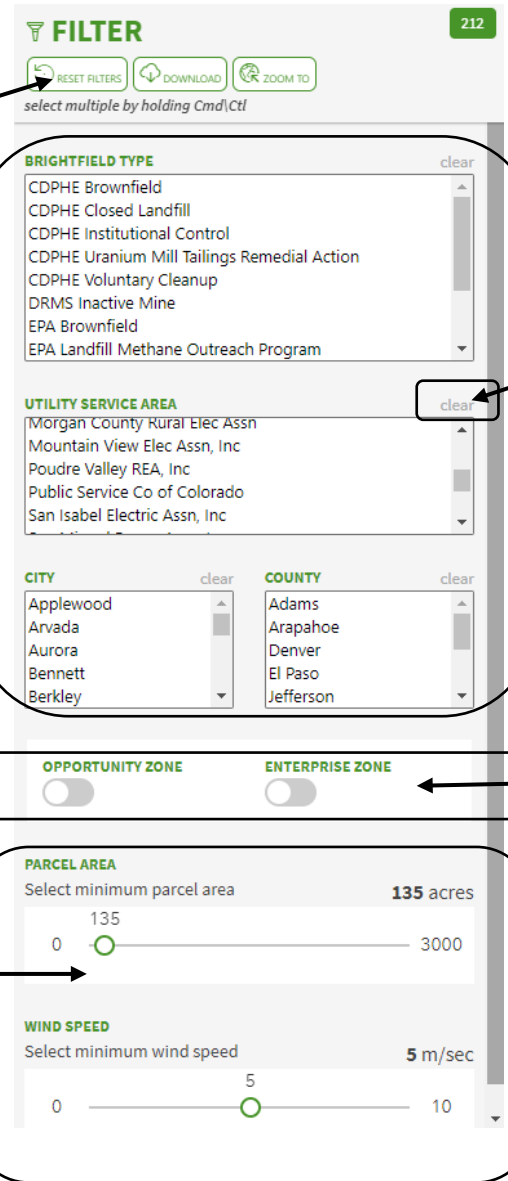
Green link opens county assessor's property report in new window

Property Name

Click dock icon to connect data table to parcel or moved it to right side of screen



Filters



FILTER 212

RESET FILTERS DOWNLOAD ZOOM TO

select multiple by holding Cmd/Ctrl

BRIGHTFIELD TYPE clear

- CDPHE Brownfield
- CDPHE Closed Landfill
- CDPHE Institutional Control
- CDPHE Uranium Mill Tailings Remedial Action
- CDPHE Voluntary Cleanup
- DRMS Inactive Mine
- EPA Brownfield
- EPA Landfill Methane Outreach Program

UTILITY SERVICE AREA clear

- Morgan County Rural Elec Assn
- Mountain View Elec Assn, Inc
- Poudre Valley REA, Inc
- Public Service Co of Colorado
- San Isabel Electric Assn, Inc

CITY clear

- Applewood
- Arvada
- Aurora
- Bennett
- Berkley

COUNTY clear

- Adams
- Arapahoe
- Denver
- El Paso
- Jefferson

OPPORTUNITY ZONE **ENTERPRISE ZONE**

PARCEL AREA

Select minimum parcel area **135 acres**

0 135 3000

WIND SPEED

Select minimum wind speed **5 m/sec**

0 5 10

Select Reset Filters Icon to clear all filters at once

Choose filter options to narrow site selection based on Brightfield type, Utility Service Area, City and County
Hold down Cmd or Ctrl key to select more than one option in each category

Select Clear to reset associated filter

Toggle on to filter for sites that are in Enterprise and/or Opportunity Zones.

Slide buttons to select minimum parcel area and minimum wind speed

Overview of Overlay, Search, Download and Filter Reset Options

Toggle on and off all layers.
Note that Brightfield points,
Brightfield parcels and county
boundaries default to always on

Open list of available layers
(see next diagram)

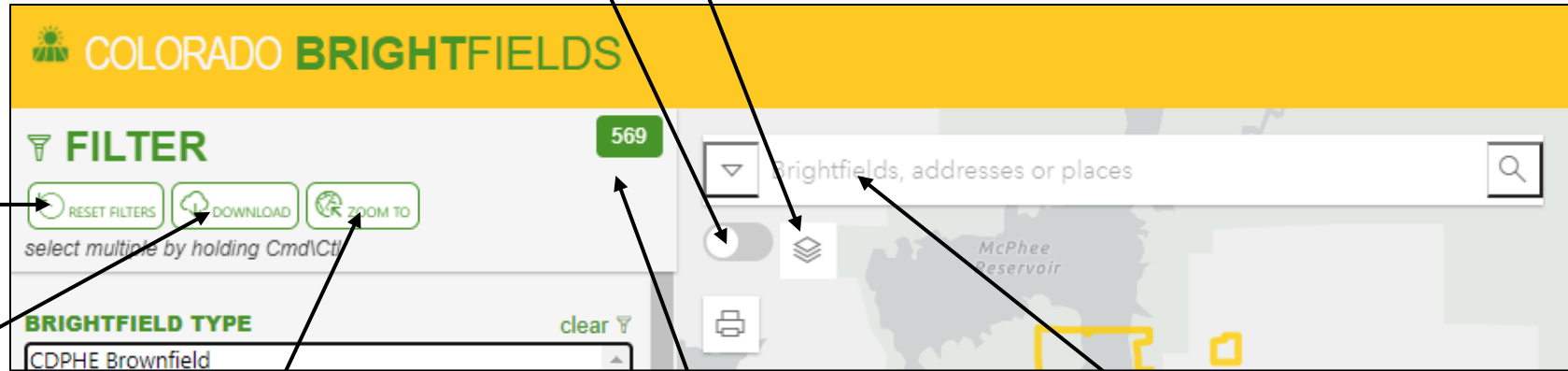
Reset all
filters

Download tabular data in
CSV format for parcels that
meet selected filter criteria

Zoom to the extent of all
Brightfield sites that
meet the filter criteria

Indicates number of parcels that
meet current filter criteria

Search for a Brightfield
name, street address or
place name



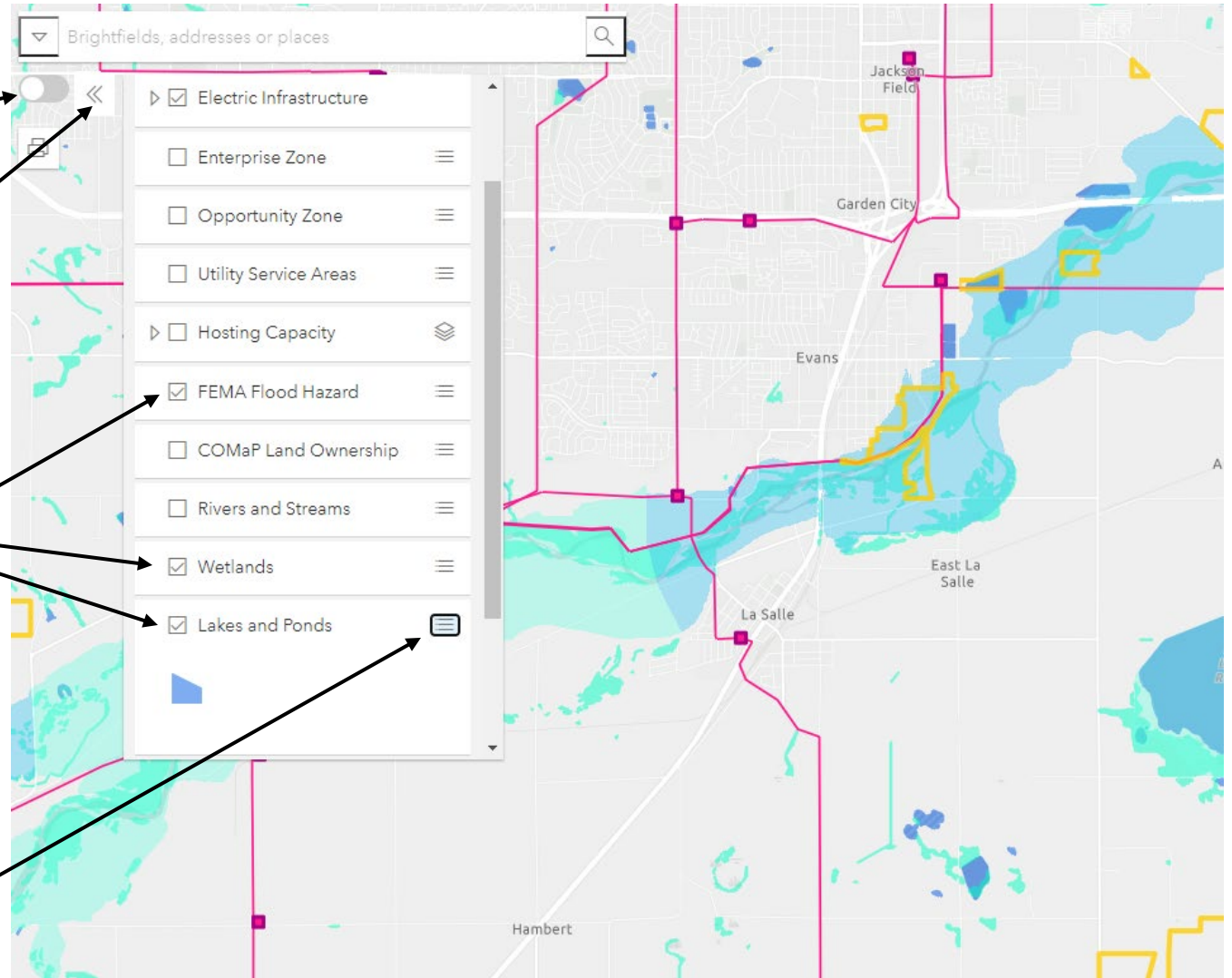
Overlays

Toggle all layers on and off
Note that Brightfield points,
Brightfield parcels and county
boundaries default to always on

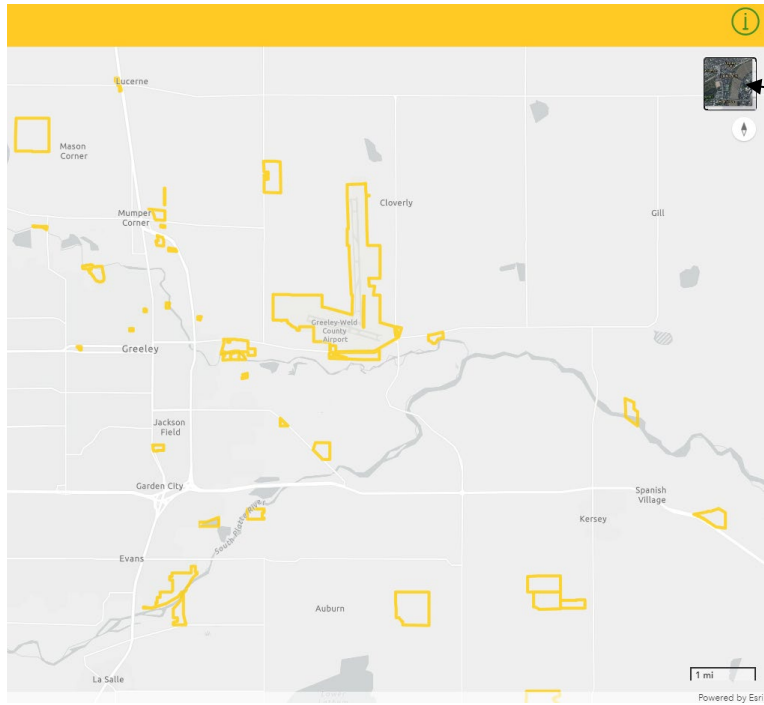
Open / close list of layers

Check select box(es)
to turn layers on and off

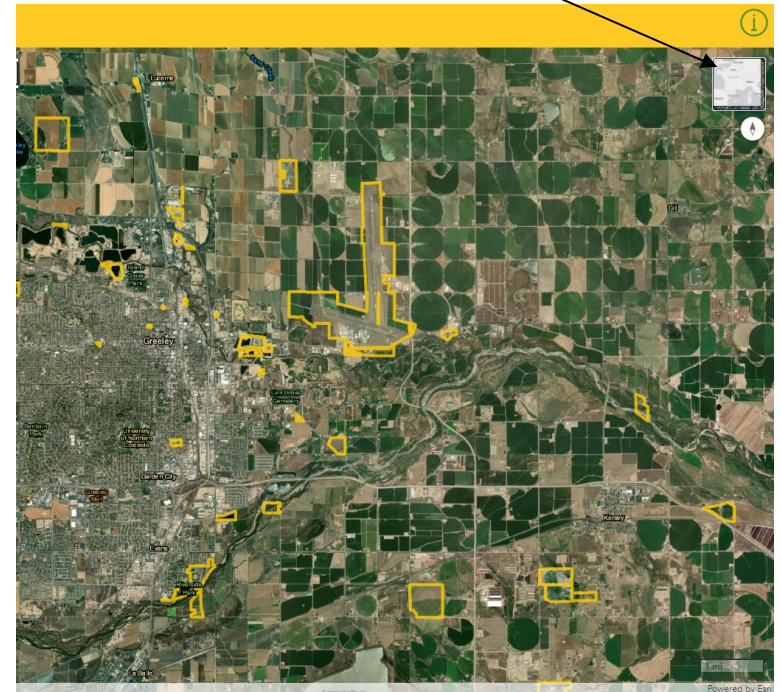
Click on the icon to the
right of layer name to
see a symbol legend



Base Maps

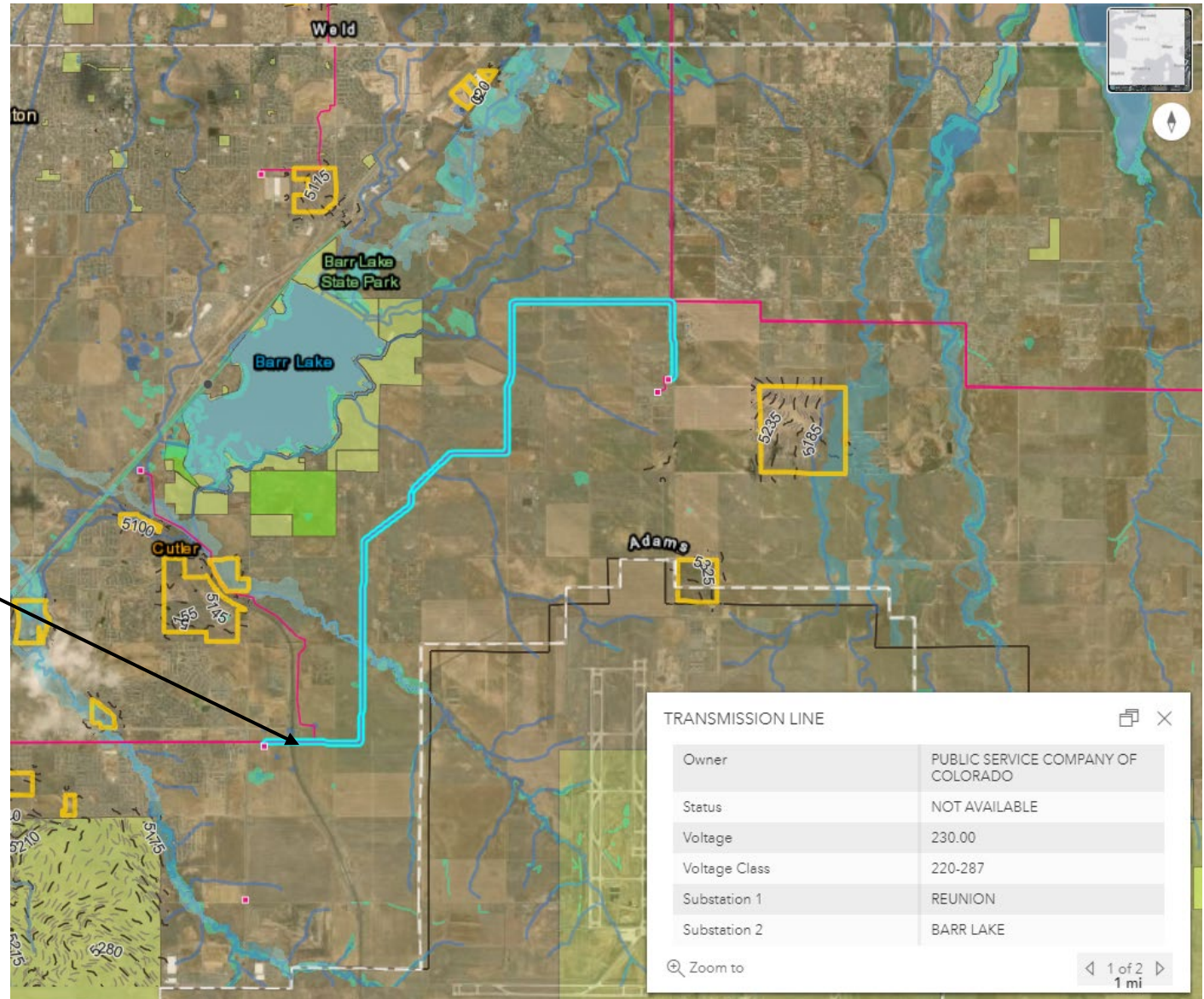


Toggle between simple street map and satellite map

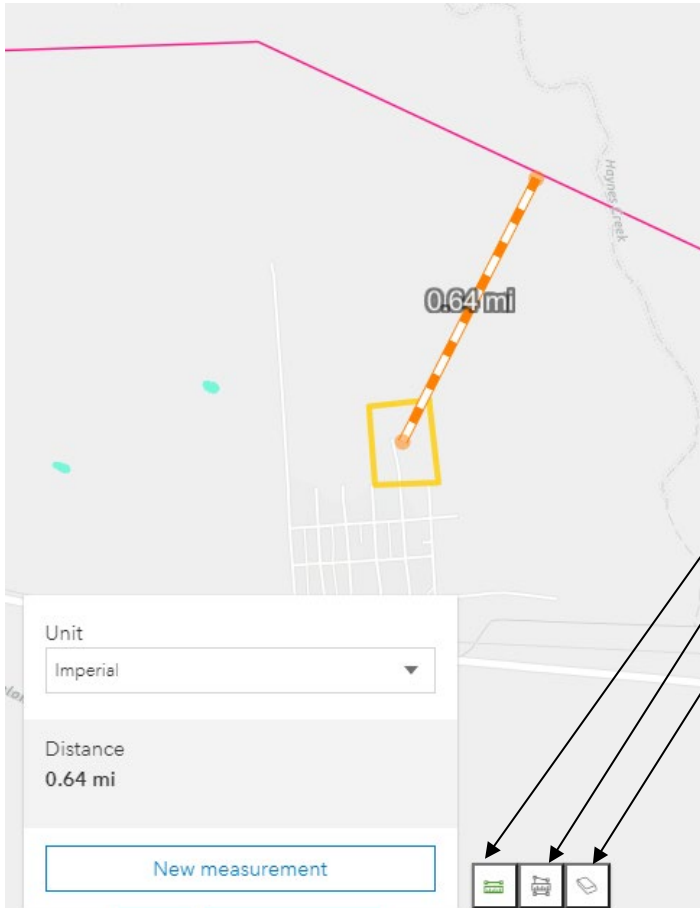


Attributes

Select a transmission line, substation, COMaP land ownership parcel, conservation area or conservation easement to see more information about that feature. In this example, a transmission line is highlighted in light blue and the pop-up box provides available details about that



Measure Tools



Use the measure tools at the bottom left of the mapper to measure distances and areas

- Measure distance
- Measure area
- Erase measurement



Distance between center of Brightfield parcel and closest transmission line

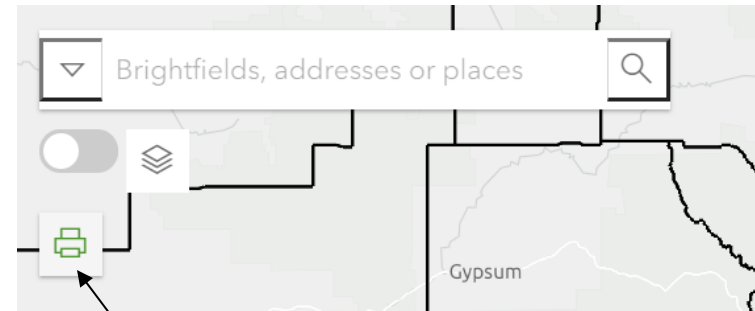
Area of undeveloped portion of Brightfield parcel



Download and Print



Click the Download icon to export the data that meet the current filter selection to a .csv file



Click the Print icon to send screen view to a printer or pdf.

Info and Map Orientation



Click the info icon to find information about Colorado Brightfields and links to additional resources, including Fact Sheet, User Guide, FAQs and Resources

Map orientation is North by default. Orientation can be changed by right clicking on the map and dragging it with a mouse or using two finger touch on touch screen.

Click the compass icon to reset to North up.

