



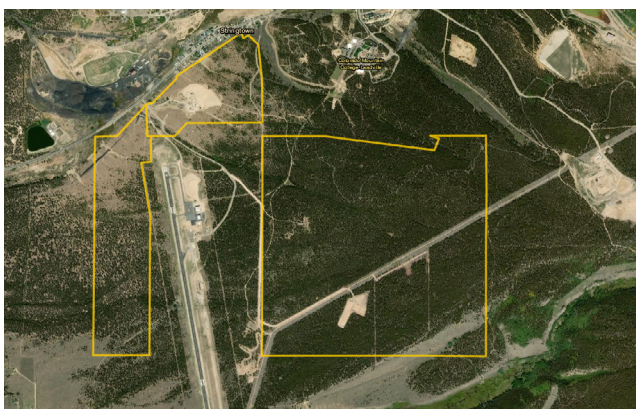
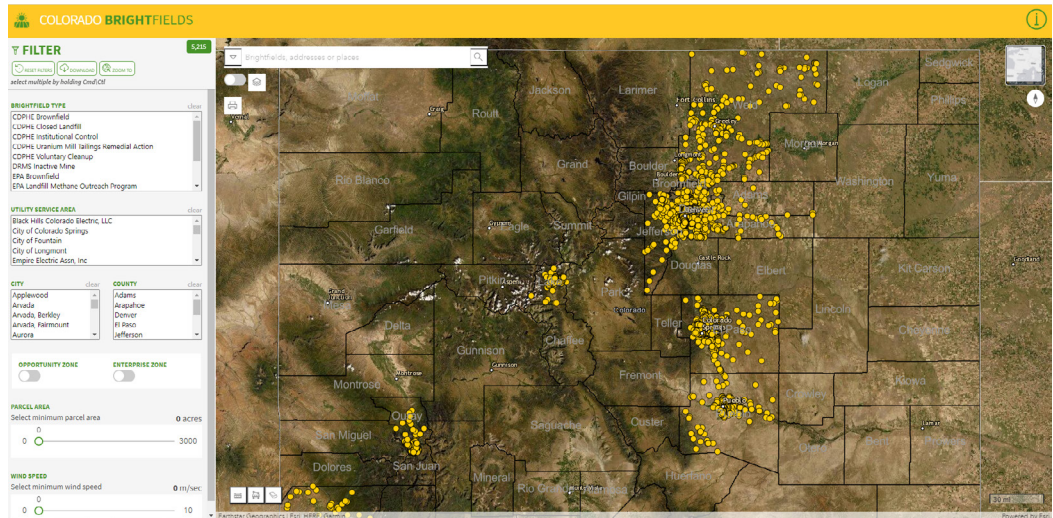
Colorado has set a goal to achieve 100% renewable energy by 2040.

COLORADO BRIGHTFIELDS is an innovative web-mapping application that can help to identify marginalized properties for potential renewable energy redevelopment. With large, flat, open properties becoming more difficult to secure for renewable energy generation, this tool is important to help achieve Colorado’s bold clean energy goal.

BRIGHTFIELD: Mine-scarred lands, former landfills and dump sites, and abandoned industrial and commercial sites often have limitations for other uses. The proximity to population centers and access to existing utility infrastructure means these parcels are often well-suited for renewable energy development.

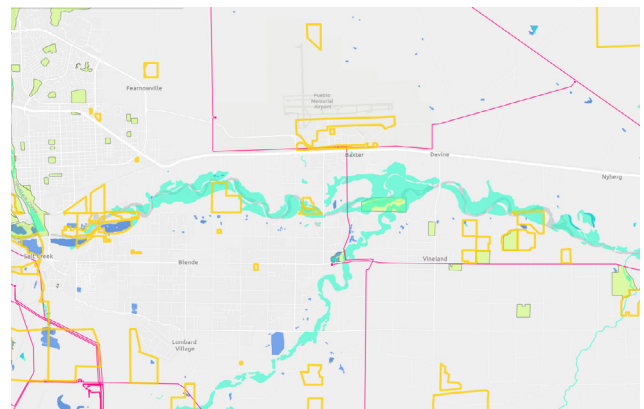
VIEW PARCELS STATEWIDE

COLORADO BRIGHTFIELDS combines over 100 separate datasets into one web-mapping application that is free and publicly available. Over 4,000 parcels and associated data can be viewed.



ANALYZE INDIVIDUAL PARCELS

Narrow results using the search and filter functions, see individual parcels at a range of scales, download parcel data for further analysis, and print maps.

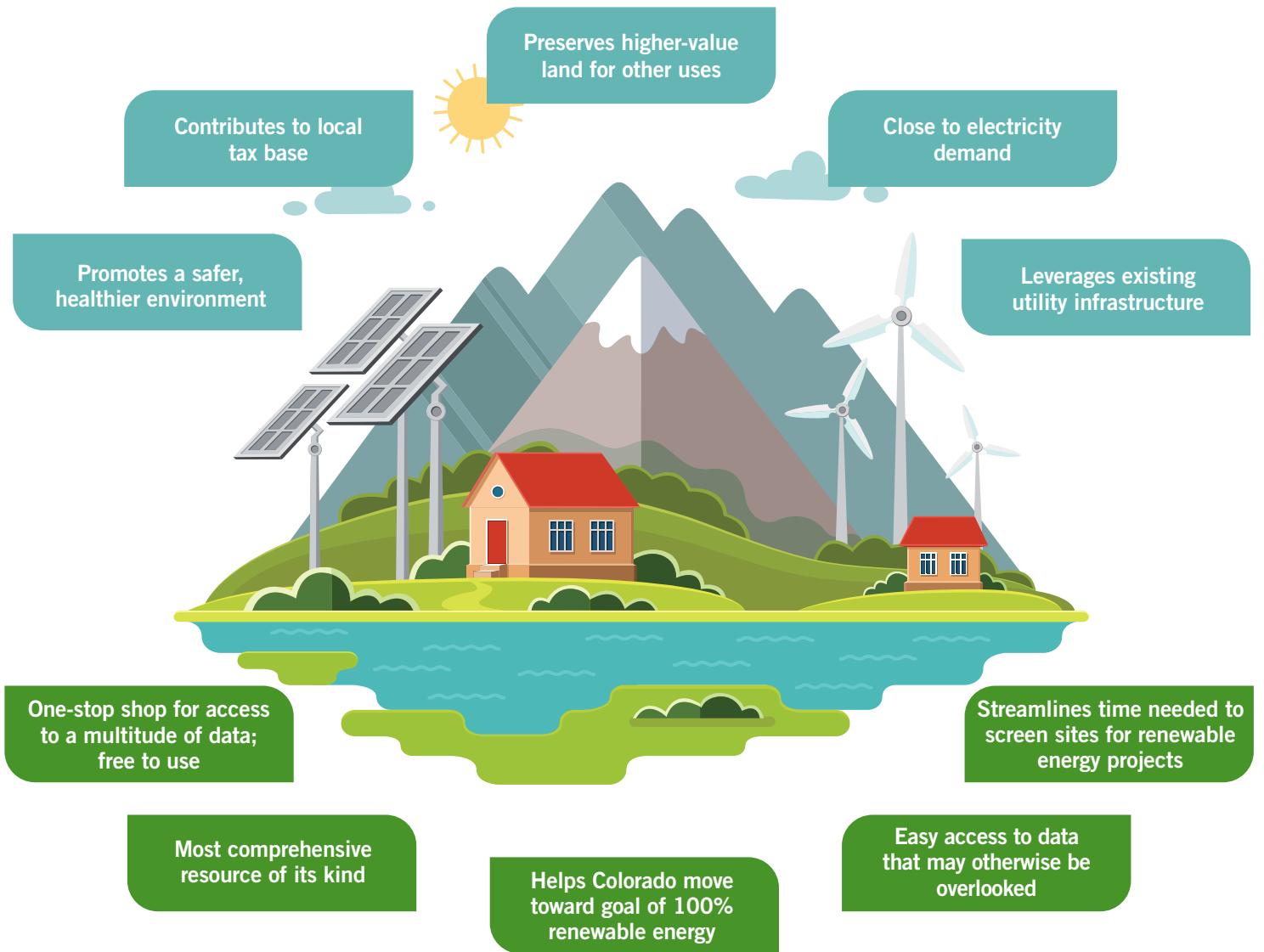


FILTERS AND LAYERS

View brightfield type, utility service area, economic development zones, parcel area, wind speed, utility infrastructure, hydrology, contours, easements, and more.



> Benefits of Redeveloping Marginalized Land with Renewable Energy



> Benefits of Using COLORADO BRIGHTFIELDS

View the COLORADO BRIGHTFIELDS site at <https://brightfields.colorado.gov>

COLORADO BRIGHTFIELDS was developed by Convergence Associates and its partners, Colorado State University and Bright Rain Solutions, with support provided by the Colorado Evaluation and Action Lab at the University of Denver.

